

YINHAWANGKA

COMMUNITY NEWSLETTER

SPRING 2015 - EDITION 4



Yinhawangka Aboriginal
Corporation

IN THIS EDITION

- ⇒ Pg 2 Positions Vacant
- ⇒ Pg 3 2015 Annual General Meeting
- ⇒ Pg 4 News from the CEO
- ⇒ Pg 4 From the Myer Family Company
- ⇒ Pg 5 NAIDOC Week report
- ⇒ Pg 5 Membership Update
- ⇒ Pg 6 Transition of Heritage
- ⇒ Pg 7 Nyimili Project – Stage Two
- ⇒ Pg 9 Healthy Country Plan
- ⇒ Pg 9 Office Needs Study
- ⇒ Pg 9 BHPB Agreement
- ⇒ Pg 9 Land Access Protocol
- ⇒ Pg 10 Bellary Springs
- ⇒ Pg 11 West Side Land



NAIDOC Week celebration in Paraburdoo

“With 200 people
in attendance
the celebration
included a Welcome
to Country from...”



Nancy Tommy, Mary Mills and Beverley Hubert in front of Nyimili Peak



POSITIONS VACANT

Cultural Heritage Officers

The Yinhawangka Aboriginal Corporation invites applications for two Cultural Heritage Officer positions.

The positions will report to the Corporation's soon to be appointed Operations Manager and will be responsible for supporting the Corporation's heritage body responsibilities and other heritage activities.

One position will be located in the Corporation's office at Paraburdoo and other at Karratha.

As the Corporation's heritage body responsibilities will not commence until mid-2016 the Officers will initial support the consultants engaged to undertake the Survey of Yinhawangka People and the preparation of the Healthy Country Plan.

Yinhawangka people interested in applying for these positions are invited in the first instance to contact the Corporation's Chief Executive Officer on 0400 203 861.

2015 Annual General Meeting

A reminder that the Annual General meeting of the Yinhawangka Aboriginal Corporation will be held on Friday 20 November at Paraburdoo in the Ashburton Hall commencing at 10.00 am.

The Beneficiaries Meeting convened by the Myer family Company will be held the previous day, Thursday 19 November, also in the Ashburton Hall commencing at 9.30 am.

YMAC will also be holding a Native Title Claim Group Meeting in the Ashburton Hall following the Corporation's Annual General meeting commencing at 2.00 pm if not before.

The members attending the Annual General Meeting will have the opportunity to receive a presentation on the Deposit E rockshelter at the West Angelas mine and

participate in an interactive demonstration of the rockshelter during the lunch period, following the end of the Annual General Meeting and before the start of the Native Title Claim Group meeting.

The Directors have appointed former CEO of the South West Land and Sea Council, Glen Kelly, to be the independent Chairman of the Annual General Meeting.

The rules for the 2015 Annual General meeting include:

- on matters of reporting members will have the right to ask questions only, not debate, with two minutes allocated for asking and explaining the question; and
- on resolutions being debated each member will be able to participate in the debate once and for a period no longer than three minutes.

The current terms of appointment of the six Directors that expire at the Annual General Meeting are:

Jardhunha

Roma Butcher
Sally Anne Johnson

Minatangunha

Nicholas Cook
Rhonda Parker

Thurantajinha and Wilga

Stuart Ingie Snr
Mary Mills

The Directors whose term continue to the 2016 Annual General Meeting are:

Jardhunha

Doreen James
Pamela Condon

Minatangunha

Coralie Cooke
Rodney Parker

Thurantajinha and Wilga

Roy Tommy
Nancy Tommy

The form to be used for nominating for election as a Director is on the Corporation's website.

The form to be used by a member to appoint a proxy to the Meeting if they are not able to attend is also on the Corporation's website.

News from the Chief Executive Officer



Chief Executive Officer John Hughes

In May this year the Corporation, through an advertisement in the Weekend West, advertised for firms to express of interest in providing a range of important services to the Corporation.

Those services were:

- Bookkeeping

- Accounting
- Legal Advice – Native Title / Prescribed Body Corporate
- Legal Advice – Corporate / Commercial
- Independent Director – Yinhawangka Enterprises Ltd.

At their meeting on 21 July the Directors shortlisted three of the eight bookkeeping and accounting firms that responded for face to face interview. The Directors also shortlisted two of the eight legal services – corporate / commercial firms for interview and three of the eight legal services – Native Title / Prescribed Body Corporate firms for interview.

The Directors also shortlisted four of the eighteen people that expressed interest in the Independent Director position for Yinhawangka Enterprises Ltd.

The Directors carried out the face to face interviews at Karratha on 19/20/21 August.

Following the interviews the Directors resolved to appoint Jackson McDonald as the legal firm advising the Corporation on corporate and commercial matters for a period of two years and KRED Legal as the legal firm advising the Corporation on Native Title / Prescribed Body Corporate matters, also for a period of two years. The Directors position is however that until the Yinhawangka People receive native Title Determination YMAC will continue to be the Corporation's source of legal advice in Native Title matters.

The Directors are still finalising the appointment of a firm to provide bookkeeping and accounting services to the Corporation and the appointment of the Independent Director position of Yinhawangka Enterprises Ltd.

From the Myer Family Company

The application forms for charitable benefits from the Yinhawangka Trust were recently amended. The new forms have been mailed out to beneficiaries. The new forms can also be obtained from the Corporation's website.

MFC^o
Lore & Culture Policy
Promotion of Law and Culture
Provides each registered beneficiary with financial assistance to attend Lore & Culture meetings and/or events throughout the year. No alcohol or cigarettes will be paid for.

BENEFICIARY INFORMATION

Application Date: _____

Full Name: _____ Date of Birth: _____

Street Address: _____

City / Suburb: _____ State: _____

Email: _____ Phone: _____

Suffix: ☐ Junior ☐ Senior

MEETING DETAILS

Location: _____

Estimated Period of Time at Meeting: _____ Date from: ____/____/____ To: ____/____/____

FUNDS REQUESTED

Travel	\$	<input type="checkbox"/> Fuel <input type="checkbox"/> Flights	Location travelling from: _____
Food	\$	<input type="checkbox"/> Food <input type="checkbox"/> Water <input type="checkbox"/> Ice	
Supplies	\$	<input type="checkbox"/> Camping equipment <input type="checkbox"/> Building Supplies	
Other	\$	<input type="checkbox"/> Cooking Equipment	
Total funds requested	\$	Please specify: _____ Maximum \$2,000 per application Maximum \$6,000 per beneficiary per financial year	

SUPPORTING DOCUMENTATION

Is this your first Lore & Culture Application since 1 July 2015?
If YES, I understand that in order to apply for further assistance I must provide receipts to account for how I spend these funds.
If NO, have you ever accessed these funds before?

NAIDOC Week Report

The Corporation's Administration Officer, Tania Johnson, working in close collaboration with the Shire of Ashburton, played the major role in the very successful NAIDOC Week celebration in

Paraburdoo on Saturday 4 July.

With 200 people in attendance the celebration included a Welcome to Country from Pamela Condon, performances by David Ward and

the Bartlett Brothers, craft activities including boomerang painting, a native foods tasting table and a damper making competition.



NAIDOC Week celebration in Paraburdoo

Membership Update

In recent months the Corporation has been encouraging Yinhawangka People to become members of the Corporation.

Prior to the commencement of the membership drive about 65 of the 285 people in the Register of Yinhawangka People were

yet to become a member of the Corporation.

As a result of the drive the number of Yinhawangka people not members of the Corporation has been reduced to 15.

Following a recent update of

the contact information held by the Corporation in the Register of Yinhawangka People (an important role of the Corporation is to maintain and keep up to date the Register of Yinhawangka People) some basic demographic information has been compiled.

Yinhawangka People by Location

Location	Number
Coast (Karratha, Onslow, Roebourne, Wickham, South Hedland)	140
Inland (Tom Price, Wakathuni, Bellary Springs, Paraburdoo)	80
Other	65
Total	285

Yinhawangka People by Age (as at August 2015)

Age Range	Number
65 +	7
60-64	7
55-59	11
50-54	12
45-49	26
40-44	31
35-39	21
30-34	40
25-29	60
20-24	49
18-19	14

Current Projects

Transition of Heritage

At their meeting on 11 and 12 May this year the Directors selected, from four proposals received, a joint proposal from Anthropos Australis and MLCS Corporate to develop a Business Plan and Transition Plan to guide the transfer of Yinhawangka 'Heritage Body' responsibilities arising from the Rio Tinto Claim Wide Participation agreement from YMAC to the Corporation.

This step was identified at a Yinhawangka Community Meeting on 14 November 2012 when the following resolution was passed:

The Yinhawangka People present at this meeting resolve to appoint Yamatji Marlpa Aboriginal Corporation to be the Yinhawangka People's initial Heritage Body under the Participation Agreement until the Yinhawangka Aboriginal Corporation is incorporated and has the capacity to take over the role as Heritage Body (noting that the Yinhawangka People have the sole

decision as to the appointment of their Heritage Body).

At a workshop with Directors and several senior Yinhawangka people in Karratha on 19 and 20 August the consultants presented a range of models for the Corporation to undertake the 'Heritage Body' responsibilities.

The consultants also identified that in addition to managing the heritage survey work that is the major activity of YMAC in their current 'Heritage Body' responsibilities the Corporation would have the capacity to undertake a number of other heritage activities important to the Yinhawangka People, that is, independent of the interests of mining companies and the particular areas of land they wish to mine.

These are:

- Establishing an electronic database of Yinhawangka cultural and heritage knowledge that is accessible through appropriate protocols to Yinhawangka people;
- Fee for service delivery of cultural awareness training;
- Establishing a keeping place for artefacts and cultural material;
- Cultural Mapping and cultural research; and
- Care of important places.

The Corporation will now commence the process of recruiting the Yinhawangka staff that will enable the Corporation to progressively, throughout the first half of 2016, prepare to take on 'Heritage Body' responsibilities and commence planning for the delivery of the other heritage activities important to Yinhawangka People.



Yinhawangka men on survey around Turriff Syncline

The Corporation will now commence the process of recruiting the Yinhawangka staff that will enable the Corporation to progressively, throughout the first half of 2016, prepare to take on 'Heritage Body' responsibilities...

Nyimili Project – Stage Two *By Frida Blom, Terra Rosa Consulting*

The Nyimili Project is a collaborative undertaking between the Yinhawangka Traditional Owners and Terra Rosa Consulting. The project began in 2014 with Stage One and continued this year with Stage Two field trips in September, October and early November. The primary aims of the project are to identify and record the cultural, heritage and environmental values of Nyimili and the associated range. The evidence collected will eventually be used to try and get the range protected under State or Federal legislation. Yinhawangka people who have participated in the field trips are also very keen to manage the area through a future ranger program.

Some fantastic results have been achieved from the field trips. During the Stage Two field trips permanent

water sources have been identified and recorded, as well as yellow and white ochre sources, painted and walled niches. A couple of the rockshelters also have excellent potential for excavation which may yield exciting results in the future.

The terrain is very difficult and we spent several nights camping in the mouth of one of the gorges to allow greater access to the heart of the range. Our results so far support the idea that Nyimili and the range were an important focus of activity for the Yinhawangka people. Any further investigation is likely to continue to yield outstanding cultural and heritage values. During the latter field trips we were also incredibly privileged to have the services of Claire Leach, a director of photography who collected videos and photographs of the range,

gorges, sites and the stories that people had to tell about the places.

Currently, the primary tangible product of the project, from Stage One, is a virtual tour of Nyimili via an online, interactive map. Using this tool, Yinhawangka people will soon be able to virtually visit Nyimili and tour the range, landscape features, cultural and heritage sites. These values will be represented in panoramic photos which will contain photographs and videos that will help tell the story of the places and provide a mechanism for the preservation and transmission of important cultural knowledge to future generations of Yinhawangka. This tool will be updated in the coming months with the data collected from the Stage Two field trips.



Cooking breakfast in the gorge on the camping trip

Current Projects [CONTINUED]



Roy Tommy demonstrating the use of a firestick found in one of the rockshelters



Nancy Tommy, Mary Mills and Beverley Hubert in front of Nyimili Peak



Club stick and firesticks from a rockshelter at Nyimili (scale = 10 cm)



Heavily pecked grinding base from a rockshelter at Nyimili



Marlon Cooke making a dancing stick at Nyimili

Upcoming Projects

Healthy Country Plan

The Corporation advertised in the Weekend West on 17 October for quotations from suitably qualified firms to, in liaison and consultation with the Yinhawangka People, prepare a Healthy Country Plan for Yinhawangka Country.

The aim for the Healthy Country Plan is to:

- Identify areas of special environmental interest;
- Assess the current health of the Country; and
- Determine the current and future management requirements of the Country.

The Healthy Country Plan will:

- Provide the Yinhawangka People with a full and common understanding of the health of their Country and an increased capacity to contribute to land and other cultural management practices;
- Recommend direct actions to preserve and manage the cultural landscapes, priority flora, fauna and the values of the surface and underground waters of their Country; and
- Outline the potential for a Yinhawangka Ranger group to be established to undertake an annual works program to implement the Plan.

It is expected the work on preparing the Healthy Country Plan will commence in early 2016 and the Plan will be available to present at the Corporation's 2016 Annual General Meeting.

Corporation's Office and Other Accommodation Needs Study

The Directors of the Corporation have been considering the office and other accommodation needs of the Corporation in Paraburdoo for nearly eighteen months.

Currently the Corporation's staff work from the former Deputy Principal's office in the Paraburdoo Primary School, an unsatisfactory arrangement due to the inaccessibility of the office to members of the Corporation.

A number of options for meeting the office accommodation needs of the Corporation in Paraburdoo have been put to the Decision Making Committee (DMC) and the Yinhawangka Council for funding without success.

Recently the Directors agreed to accept an offer of up to \$50,000 from the DMC and Council to undertake a detailed study of the options for office accommodation in Paraburdoo and Tom Price, including the Directors preferred site of Lot 606 in Paraburdoo.

Through a Request for Quotation (RFQ) process, with firms with the required skills recommended by the Property Council of Australia, Perth firm Development Management Group was engaged on 16 October to undertake the study, with the requirement that the work be complete within four weeks.

The Directors will therefore be able to indicate the results of the study to members at the Corporation's Annual General Meeting.

BHPB Agreement

A requirement of the recent BHPB Agreement with the Yinhawangka People is that distributions to Yinhawangka beneficiaries can only occur after the beneficiary has signed a Ratification Deed, similar to the Rio Tinto Ratification Deed requirement.

The Yinhawangka people attending the Beneficiaries Meeting on 19 November and the Corporation's Annual General Meeting on 20 November will have the opportunity at each meeting to sign the Ratification Deed.

The Corporation's Implementation Manager Andrew Eastick will also undertake a trip around the Pilbara soon after the November meetings to distribute and collect signed Ratification Deeds from the people who were unable to attend the meetings.

Survey of Yinhawangka People

Planning for a major survey of Yinhawangka people to commence in early 2016 is now well advanced.

The survey, originally planned for 2015, was delayed due to the recently confirmed BHPB Agreement which required a similar survey as part of the Agreement.

The Directors determined that it was sensible to delay the Corporation's survey so that arrangements could be made for the survey to be carried out in conjunction with and part funded by BHPB.

Because the survey will be conducted with each Yinhawangka person face to face it is anticipated the an early role of the soon to be engaged Cultural Heritage Officers will be assisting the survey by contacting and introducing people to the survey staff.

Land Access Protocol

The Corporation has been working with Rio Tinto to produce a Land Access Protocol for the Paraburdoo mines. A first draft of the Protocol was provided to the Corporation recently and the Corporation's comments are being incorporated into a second draft.

To enable a start on a Land Access Protocol for the Rocklea pastoral station the Corporation's Directors recently provided advice to Rio Tinto on the significant number of places on the station important to Yinhawangka People.

The preparation of a Land Access Protocol for the West Angelas mine will commence in early 2016.

Upcoming Projects [CONTINUED]

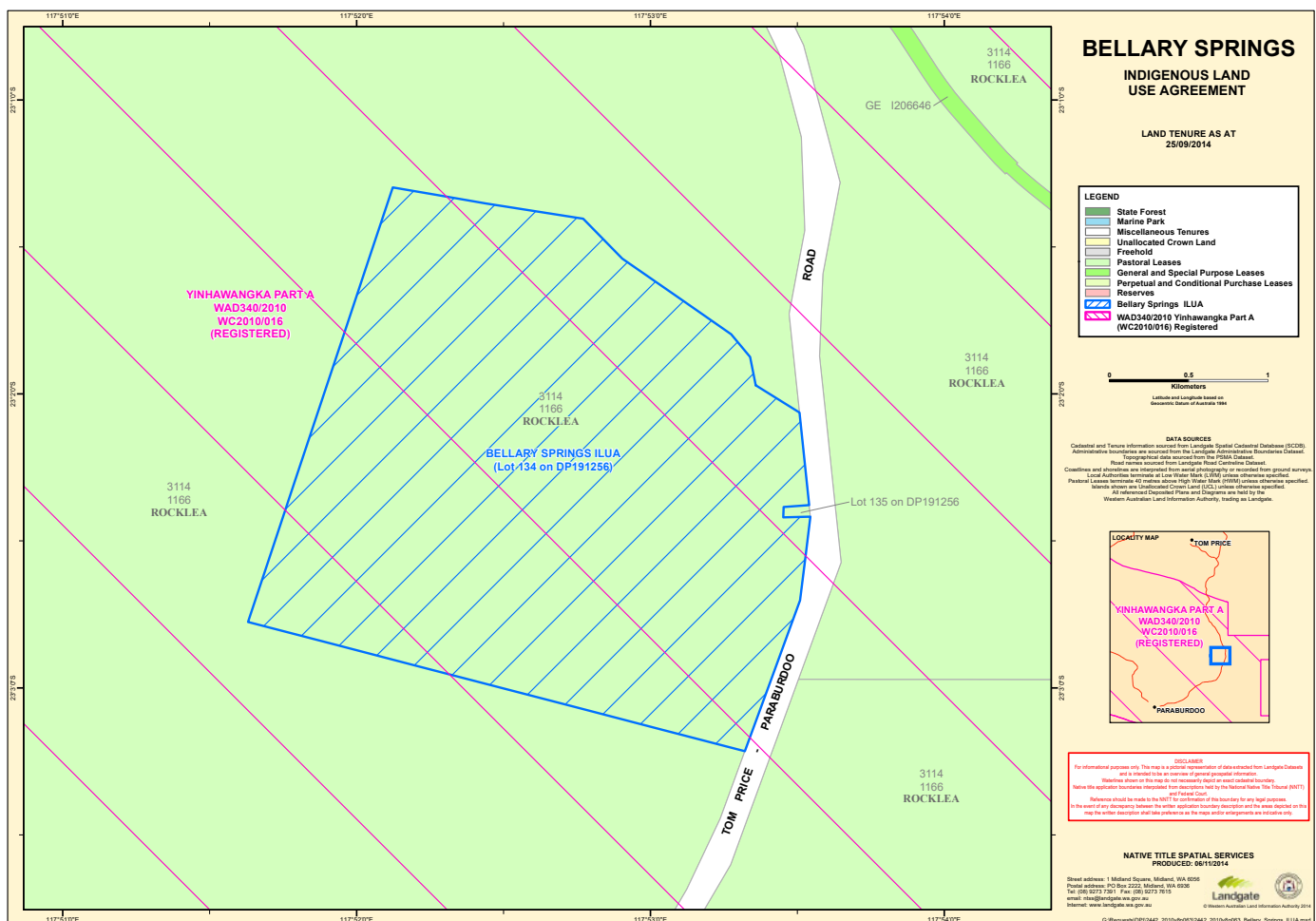
Bellary Springs

Following the recent exclusion of the Bellary Springs community from the Rocklea pastoral station a meeting of the Yinhawangka Native Title Claim Group on 15 October agreed to the Yinhawangka Aboriginal Corporation being granted a Management Order

from the Western Australian Government and assuming the overall management responsibilities for Bellary Springs.

It is not expected that the Corporation will assume management responsibilities until mid-2016.

The area associated with the Management Order and the associated Indigenous Land Use Agreement (ILUA) is indicated below.



Bellary Springs ILUA Area Plan

Upcoming Projects [CONTINUED]

West Side Land

Discussion is continuing with the Western Australian Government over the future management of the West Side land, stretching along the eastern side of the Tom Price - Paraburdoo Road between the Wakathuni and Bellary Springs communities.

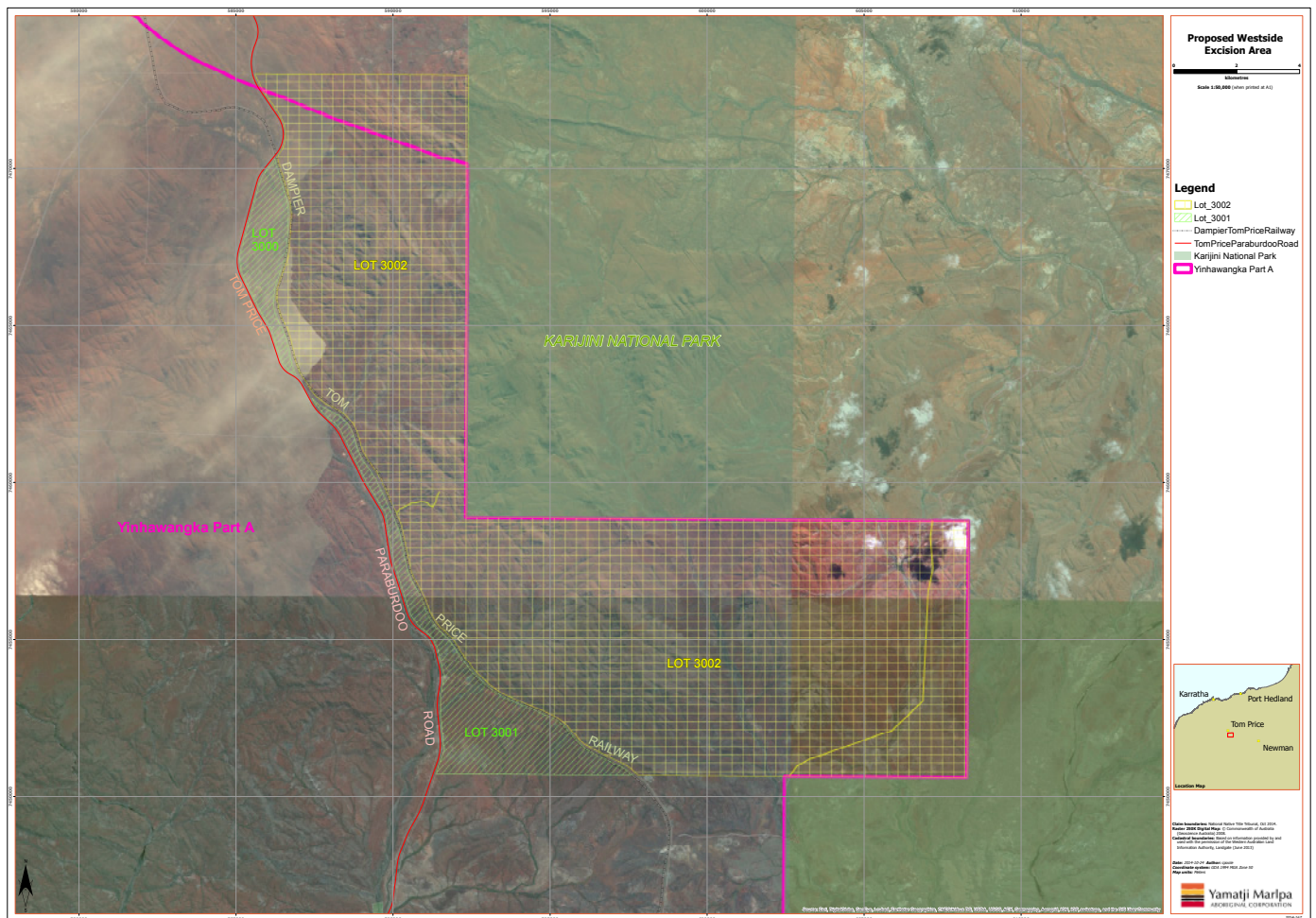
Whilst some of the West Side land has now been excluded from the

Rocklea pastoral station (the area east of the Rio Tinto railway line) other land (the area between the Road and the railway line) is yet to be excluded.

The West Side land east of the railway line is of interest to the Department of Parks and Wildlife for conservation. Recent discussion about this land between the Corporation, YMAC and the Department has identified the

potential for a joint management arrangement between the Department and the Yinhawangka People.

In due course this may open the way for progress in establishing a joint management arrangement between the Department and the Yinhawangka, Banjima and Nyiyaparli People for the whole of the Karijini National Park.



Aerial Photograph - Westside land

Website and Facebook Page

The Yinhawangka Aboriginal Corporation is constantly updating its website and Facebook page with important information for Yinhawangka people including job opportunities and notifications of meetings. The Facebook page currently has 177 Likes.



YINHAWANGKA
ABORIGINAL CORPORATION

Find and Like us on

facebook

Yinhawangka Aboriginal Corporation

yinhawangka.com.au